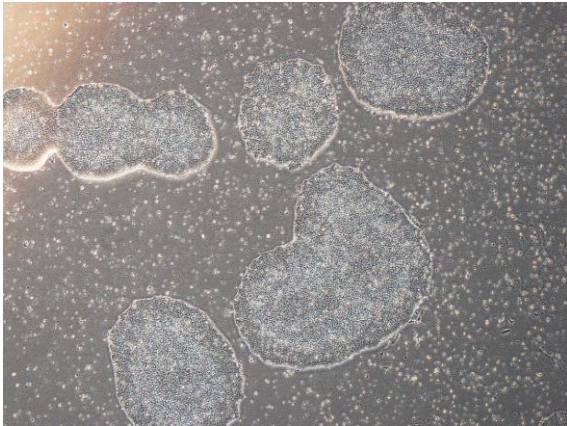
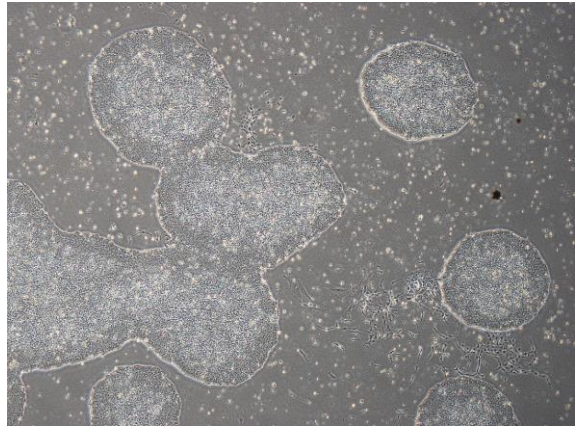


## 【 CiRA-j-1243 】 Morphology of iPSC colonies

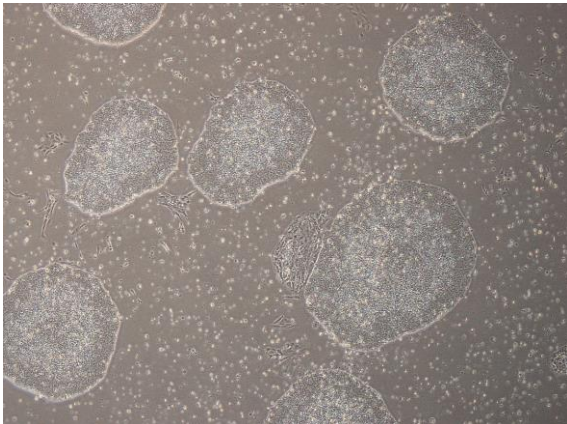
CiRA-j-1243-A: passage-3



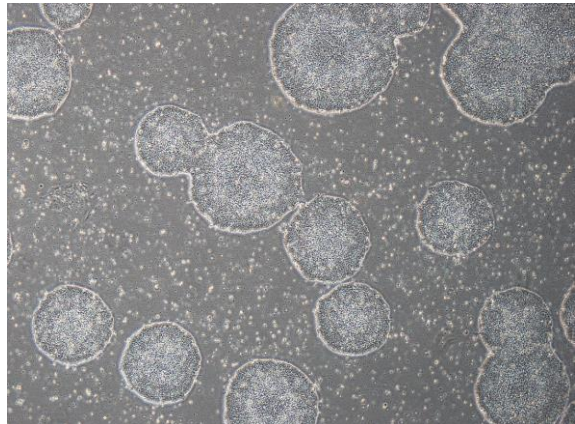
CiRA-j-1243-B: passage-3



CiRA-j-1243-C: passage-3



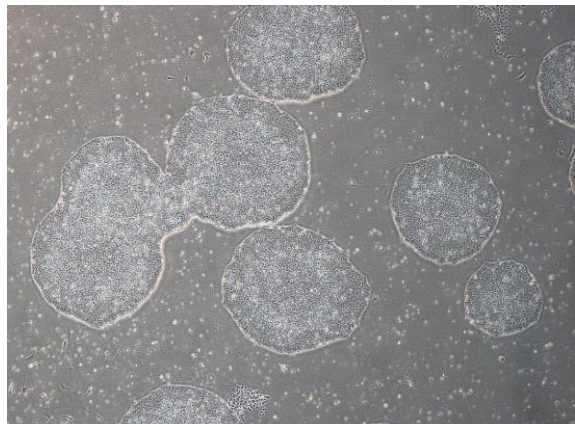
CiRA-j-1243-D: passage-3



CiRA-j-1243-E: passage-3



CiRA-j-1243-F: passage-3



( All images were captured at 4x magnification )